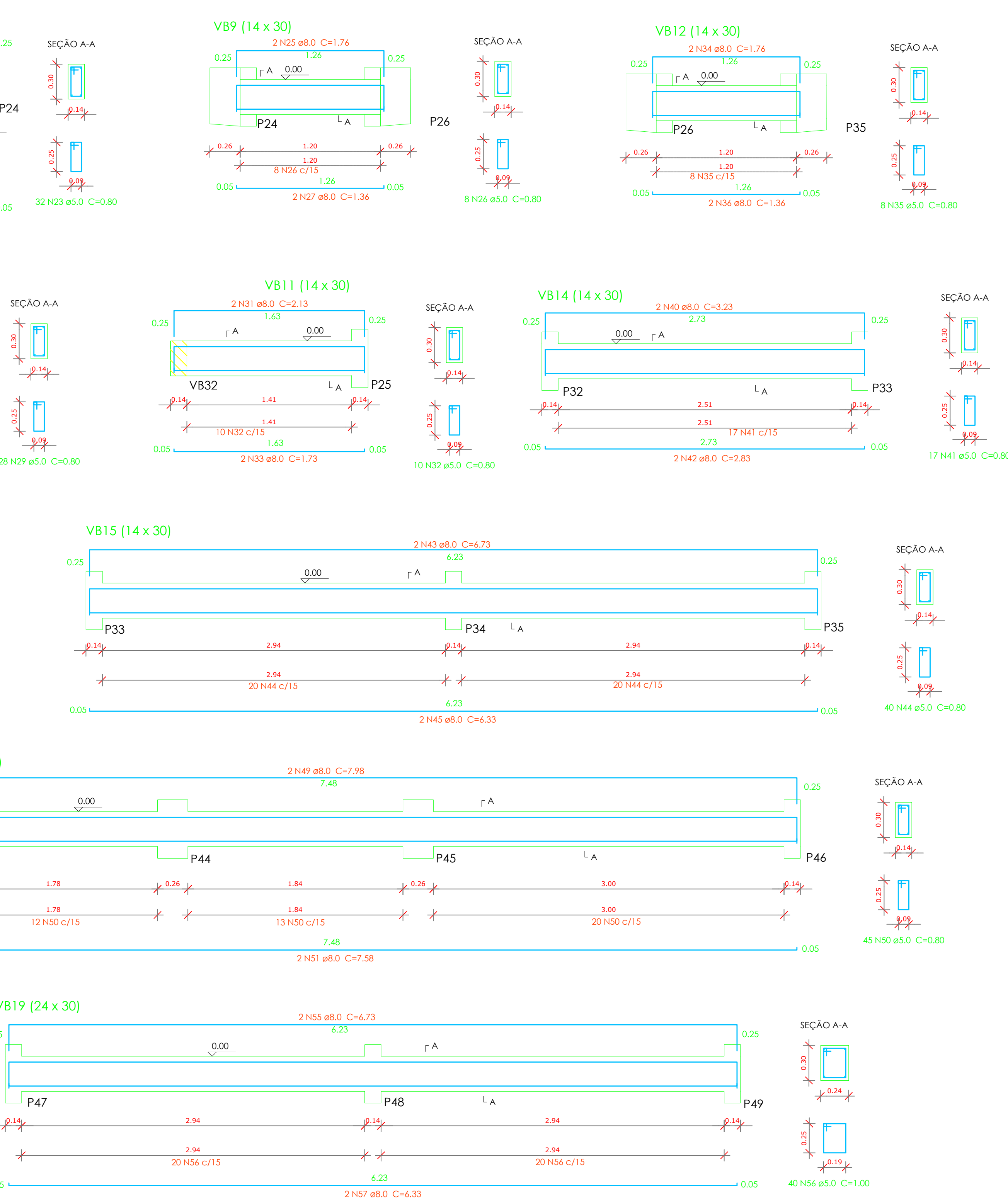
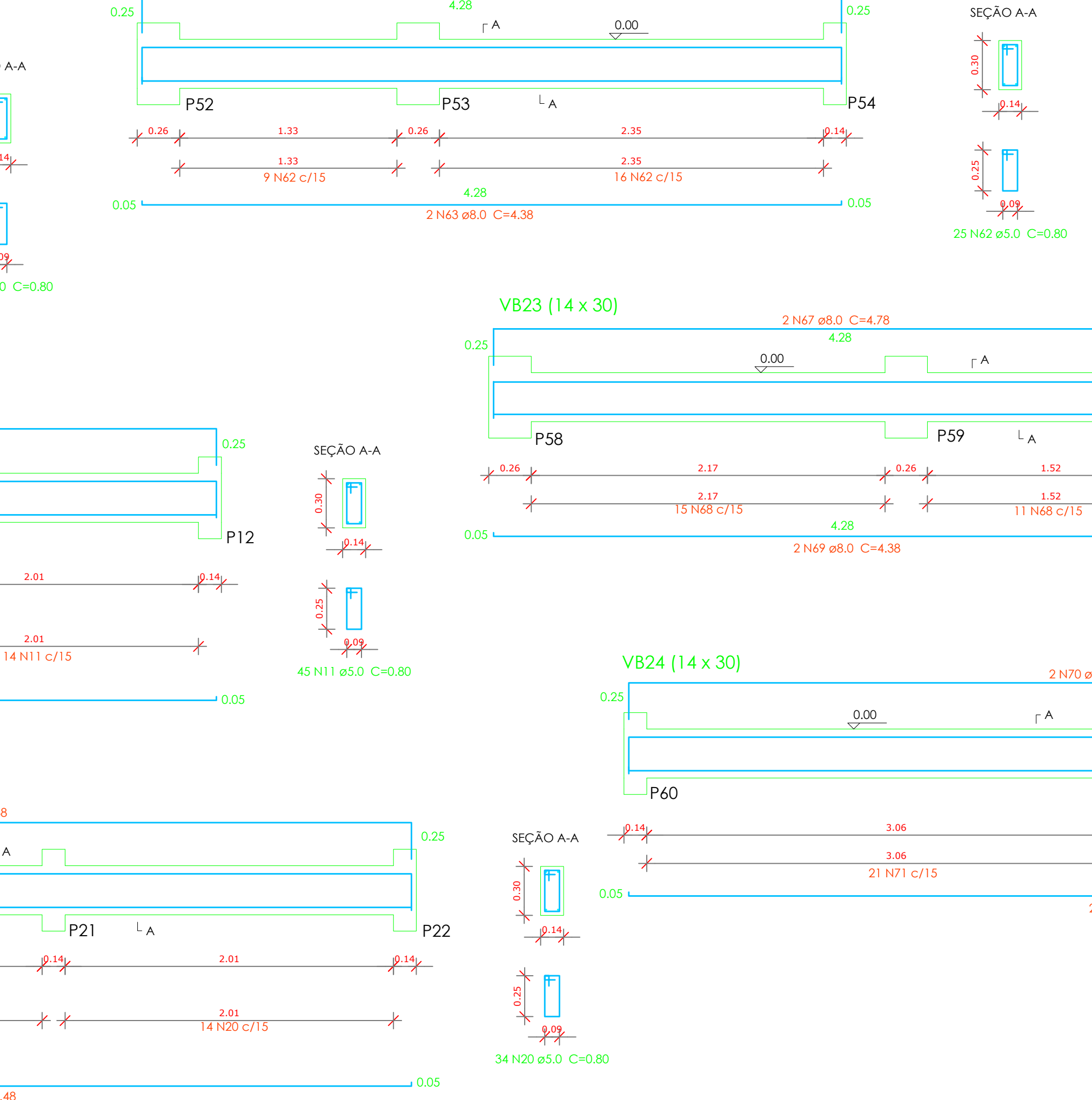
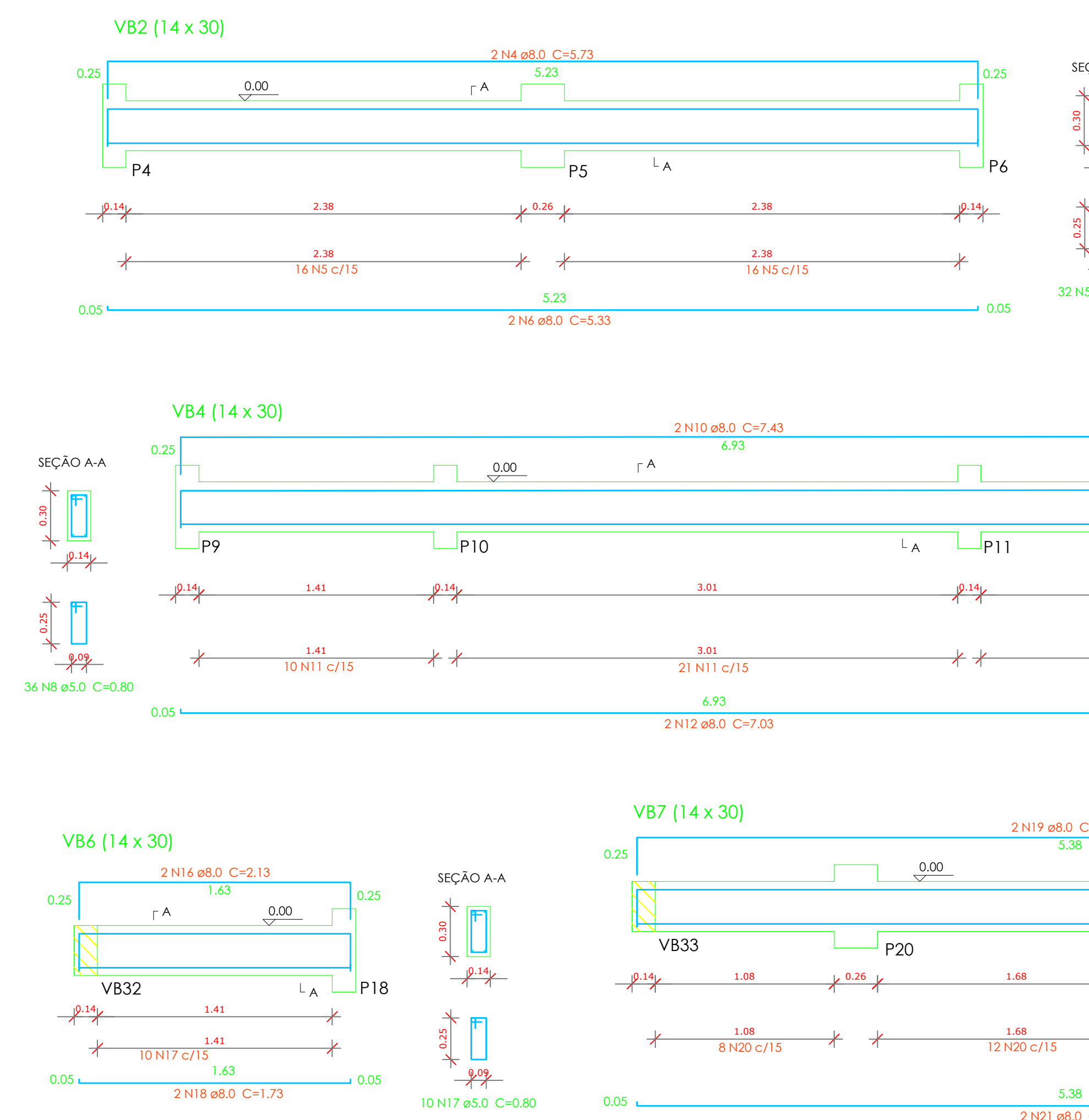
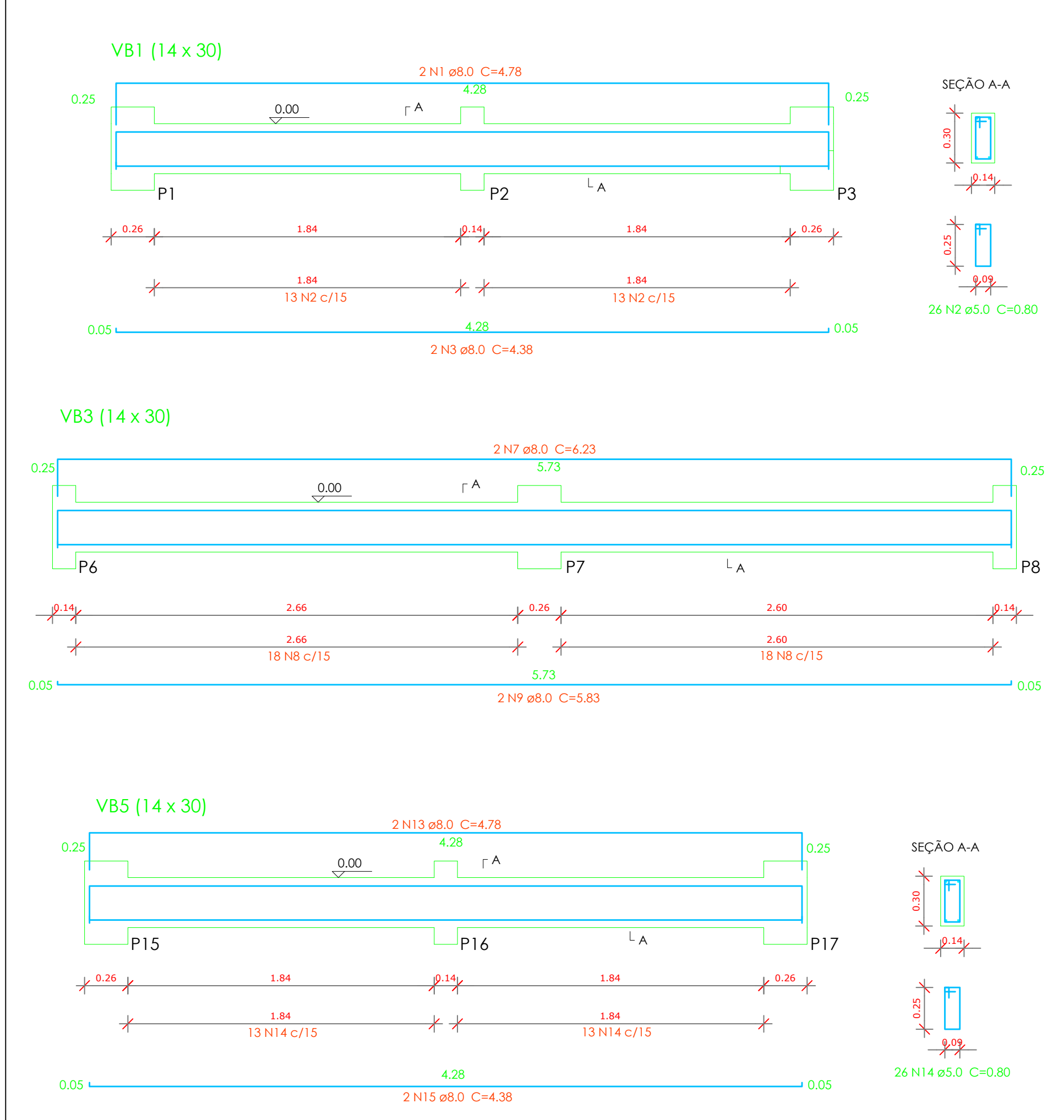


## FORMA DO NÍVEL BALDRAME (NÍVEL 0.00)

Legenda dos Pilares			
	Pilar que morre		Pilar que nasce
	Pilar que passa		Pilar com mudança de seção

Características dos materiais		
fck (MPa)	Abatimento (cm)	Dimensão máxima do agregado (mm)
25	5.00	19



Relação do Aço									
ELEMENTO	ACO	N	DIAM	QUANT	CUBM	CUBM	CUBM	CUBM	CUBM
VB1	CA50	1	8.0	2	408	956	1001	1001	1001
VB2	CA50	1	8.0	2	408	956	1001	1001	1001
VB3	CA50	1	8.0	2	408	956	1001	1001	1001
VB4	CA50	1	8.0	2	408	956	1001	1001	1001
VB5	CA50	1	8.0	2	408	956	1001	1001	1001
VB6	CA50	1	8.0	2	408	956	1001	1001	1001
VB7	CA50	1	8.0	2	408	956	1001	1001	1001
VB8	CA50	1	8.0	2	408	956	1001	1001	1001
VB9	CA50	1	8.0	2	408	956	1001	1001	1001
VB10	CA50	1	8.0	2	408	956	1001	1001	1001
VB11	CA50	1	8.0	2	408	956	1001	1001	1001
VB12	CA50	1	8.0	2	408	956	1001	1001	1001
VB13	CA50	1	8.0	2	408	956	1001	1001	1001
VB14	CA50	1	8.0	2	408	956	1001	1001	1001
VB15	CA50	1	8.0	2	408	956	1001	1001	1001
VB16	CA50	1	8.0	2	408	956	1001	1001	1001
VB17	CA50	1	8.0	2	408	956	1001	1001	1001
VB18	CA50	1	8.0	2	408	956	1001	1001	1001
VB19	CA50	1	8.0	2	408	956	1001	1001	1001
VB20	CA50	1	8.0	2	408	956	1001	1001	1001
VB21	CA50	1	8.0	2	408	956	1001	1001	1001
VB22	CA50	1	8.0	2	408	956	1001	1001	1001
VB23	CA50	1	8.0	2	408	956	1001	1001	1001
VB24	CA50	1	8.0	2	408	956	1001	1001	1001
VB25	CA50	1	8.0	2	408	956	1001	1001	1001
VB26	CA50	1	8.0	2	408	956	1001	1001	1001
VB27	CA50	1	8.0	2	408	956	1001	1001	1001
VB28	CA50	1	8.0	2	408	956	1001	1001	1001
VB29	CA50	1	8.0	2	408	956	1001	1001	1001
VB30	CA50	1	8.0	2	408	956	1001	1001	1001
VB31	CA50	1	8.0	2	408	956	1001	1001	1001
VB32	CA50	1	8.0	2	408	956	1001	1001	1001
VB33	CA50	1	8.0	2	408	956	1001	1001	1001
VB34	CA50	1	8.0	2	408	956	1001	1001	1001
VB35	CA50	1	8.0	2	408	956	1001	1001	1001
VB36	CA50	1	8.0	2	408	956	1001	1001	1001
VB37	CA50	1	8.0	2	408	956	1001	1001	1001
VB38	CA50	1	8.0	2	408	956	1001	1001	1001
VB39	CA50	1	8.0	2	408	956	1001	1001	1001
VB40	CA50	1	8.0	2	408	956	1001	1001	1001
VB41	CA50	1	8.0	2	408	956	1001	1001	1001
VB42	CA50	1	8.0	2	408	956	1001	1001	1001
VB43	CA50	1	8.0	2	408	956	1001	1001	1001
VB44	CA50	1	8.0	2	408	956	1001	1001	1001
VB45	CA50	1	8.0	2	408	956	1001	1001	1001
VB46	CA50	1	8.0	2	408	956	1001	1001	1001
VB47	CA50	1	8.0	2	408	956	1001	1001	1001
VB48	CA50	1	8.0	2	408	956	1001	1001	1001
VB49	CA50	1	8.0	2	408	956	1001	1001	1001
VB50	CA50	1	8.0	2	408	956	1001	1001	1001
VB51	CA50	1	8.0	2	408	956	1001	1001	1001
VB52	CA50	1	8.0	2	408	956	1001	1001	1001
VB53	CA50	1	8.0	2	408	956	1001	1001	1001